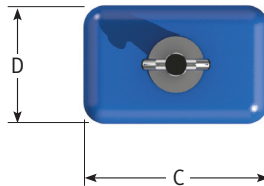


Anchor Pendant Buoyancy



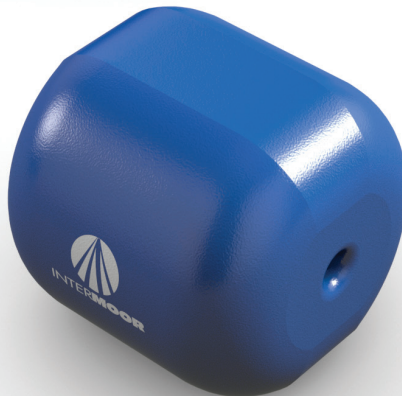
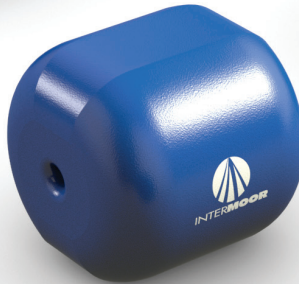
Anchor Pendant Buoyancy



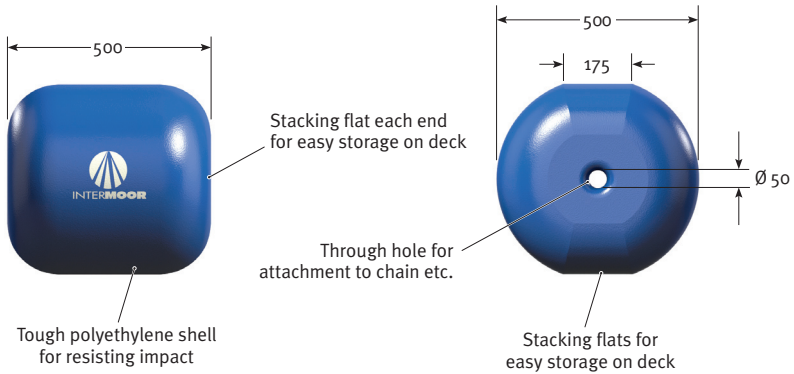
| Uplift Te | Weight in Air kg | A mm | B mm | C mm | D mm |
|--------------|---------------------|---------|---------|---------|---------|
| 4 | 750 | 2800 | 2000 | 2000 | 1250 |
| 6 | 1300 | 3450 | 2300 | 2200 | 1600 |
| 8 | 1450 | 3450 | 2300 | 2500 | 1600 |
| 10 | 1650 | 3650 | 2550 | 2700 | 1750 |
| 14 | 2200 | 4000 | 3000 | 2700 | 2000 |
| 20 | 3000 | 4500 | 3200 | 3400 | 2200 |

NOTE Other sizes are available. Specification sheet is available on request.

January 15



Ancillary Buoyancy



Weight and Dimensions

| Operating Depth msw | Net Uplift kg | Weight in Air kGG |
|------------------------|------------------|----------------------|
| 500 | 50 | 35 |
| 1000 | 45 | 38 |
| 2000 | 35 | 45 |
| 3000 | 30 | 55 |

NOTE Other sizes are available. Specification sheet is available on request.

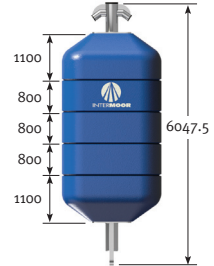
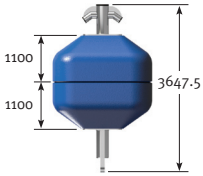
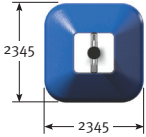
January 15

Section 7

Surface/Sub-Surface
Modular Buoyancy



Surface/Sub-Surface
Modular Buoyancy



Weight in Air (kg)
Nominal Buoyancy (kg)

| | | | | | | | | |
|---------|------|-------------|------|--------------|------|--------------|-------|--------------|
| Surface | 1645 | 7200 | 2179 | 10776 | 2714 | 14352 | 3249 | 17929 |
| 300msw | 4033 | 4812 | 5693 | 7263 | 7354 | 9713 | 9014 | 12163 |
| 500msw | 4305 | 4540 | 6094 | 6862 | 7883 | 9184 | 9672 | 11506 |
| 1000msw | 4398 | 4447 | 6231 | 6725 | 8064 | 9003 | 9897 | 11280 |
| 1500msw | 4767 | 3792 | 6776 | 5813 | 8785 | 7834 | 10794 | 9855 |
| 2000msw | 5203 | 3356 | 7417 | 5172 | 9632 | 6987 | 11846 | 8803 |

NOTE Other sizes are available. Specification sheet is available on request.

January 15